

The background of the slide features a photograph of an airplane on a tarmac during a sunset. The sun is low on the horizon, creating a warm, golden glow. The airplane's fuselage and wings are visible in the foreground, with the tail section extending towards the right. The sky is a mix of light blue and orange. A semi-transparent yellow box with a white border is centered on the slide, containing the main title.

# Risk Management Team

David Becker, Dominic Coutches, Alex Erdman, Diane Shariff

April Update

# Recent Security Breaches Close to Home

## RV Break-ins



## Syphoning Fuel



## Hangar Break-ins



Photos are illustrative, not from our neighboring airports  
Voice over will talk to specifics



# Action and Mitigation Plan

## Fencing and Signs

- Code/padlock T-  
"Hangar Gates" ✓
- Fix hole in people gate (MB?)
- Project to Fence in RV Park\*
- No tailgating, AOPA Watch signs (DC)

## Lights and Cameras

- Pole Solar Light/Camera Project for Tie Down Area\* (AE/DLB)
- Ensure working lights on CPAD Hangars (DC)
- Tie into Foothill Flight Center camera network, add 4 more cameras (AE)

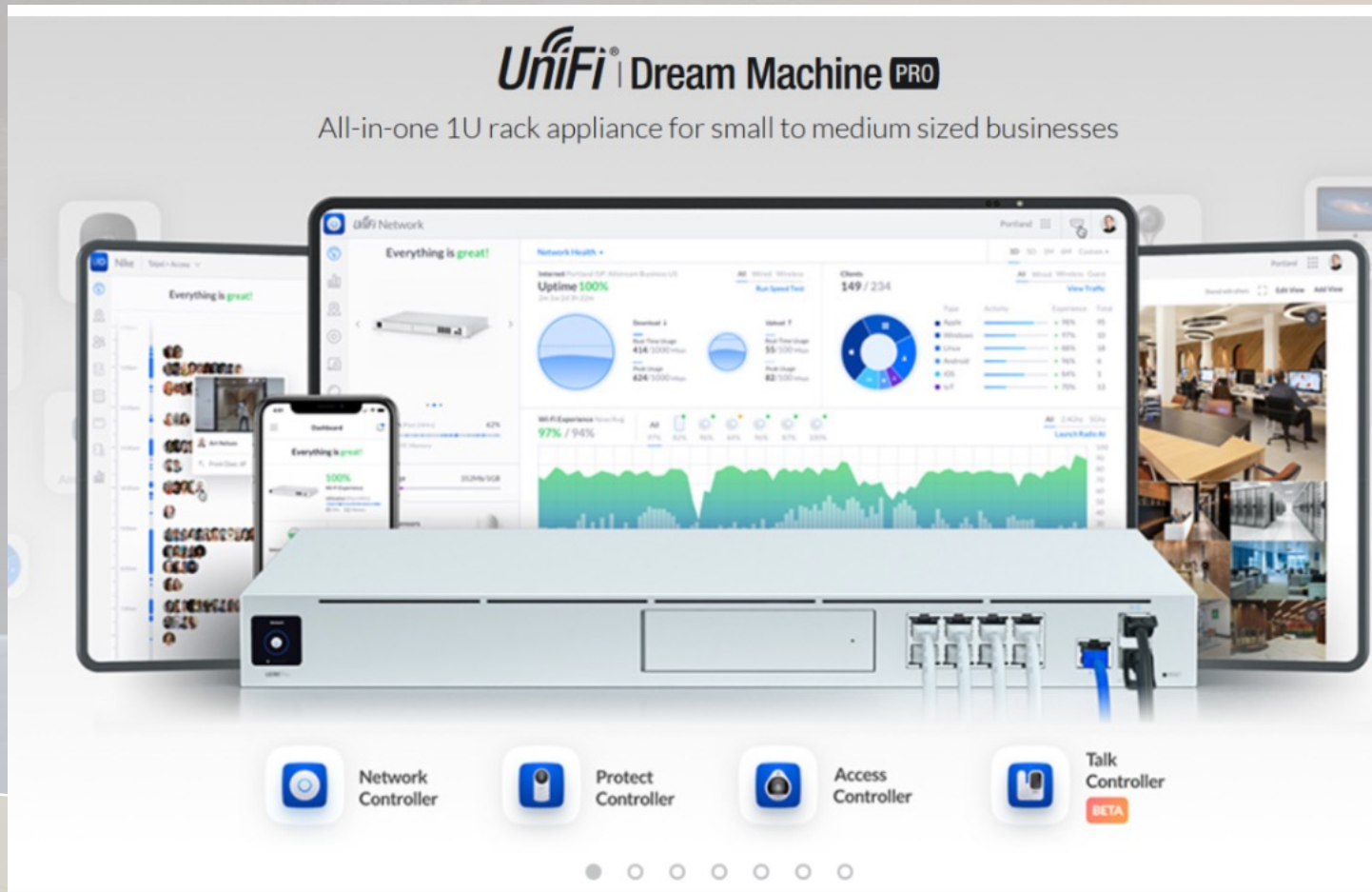
## Access

- Establish Access, Security and Indemnification Agreements (DB/DC)
- Project to Replace Gate Card System (AE/DC)

\*Need Funding for Materials and Support from FOCA/volunteers. DS to set up meeting.

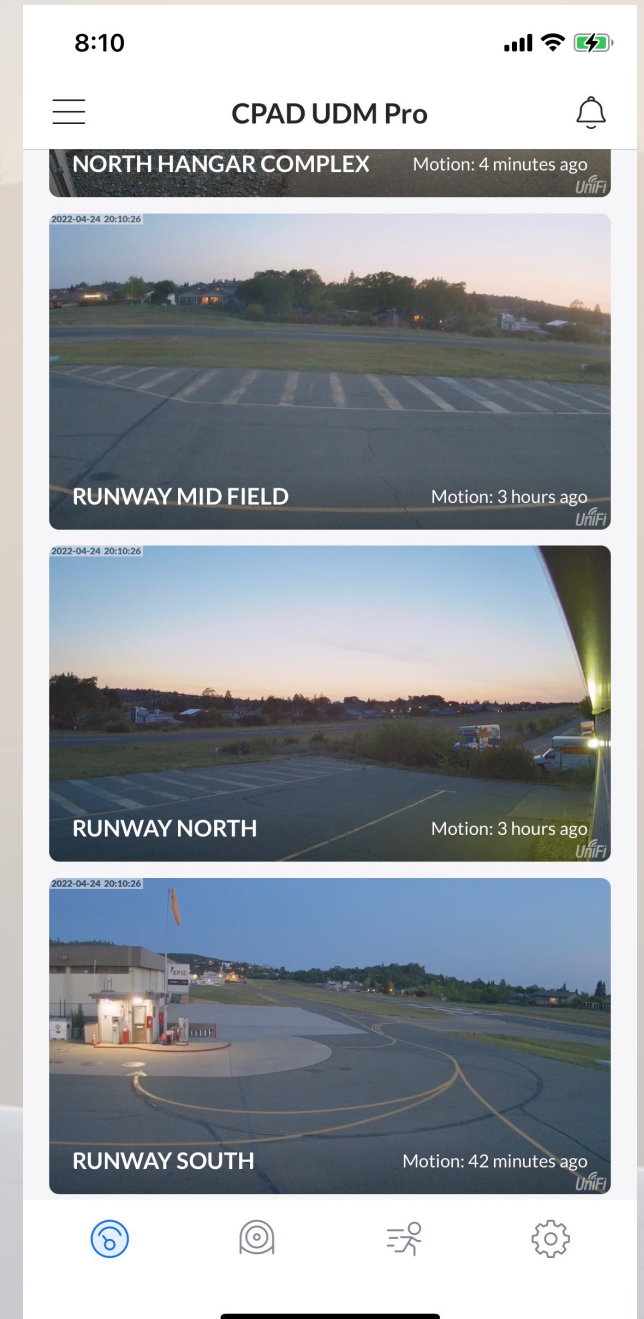
# Updated Technology Gate Keycard and Cameras

Budget Line Request: \$1,000



**UniFi Dream Machine PRO**  
All-in-one 1U rack appliance for small to medium sized businesses

The advertisement features a central image of the UniFi Dream Machine PRO hardware. Behind it, several tablets and a smartphone display the UniFi Network management interface. The interface shows a 'Network Health' dashboard with 'Everything is great!' status, 'Uptime 100%', and 'Clients 149 / 234'. It also displays various charts and tables for network performance and user activity. Below the hardware, four icons represent the device's capabilities: Network Controller, Protect Controller, Access Controller, and Talk Controller (marked as BETA).



**CPAD UDM Pro**

The image shows a mobile application interface for the UniFi Dream Machine PRO. At the top, the status bar shows the time as 8:10 and various connectivity icons. The app header includes a menu icon, the title 'CPAD UDM Pro', and a notification bell icon. The main content area displays three camera feeds from the 'NORTH HANGAR COMPLEX' area:

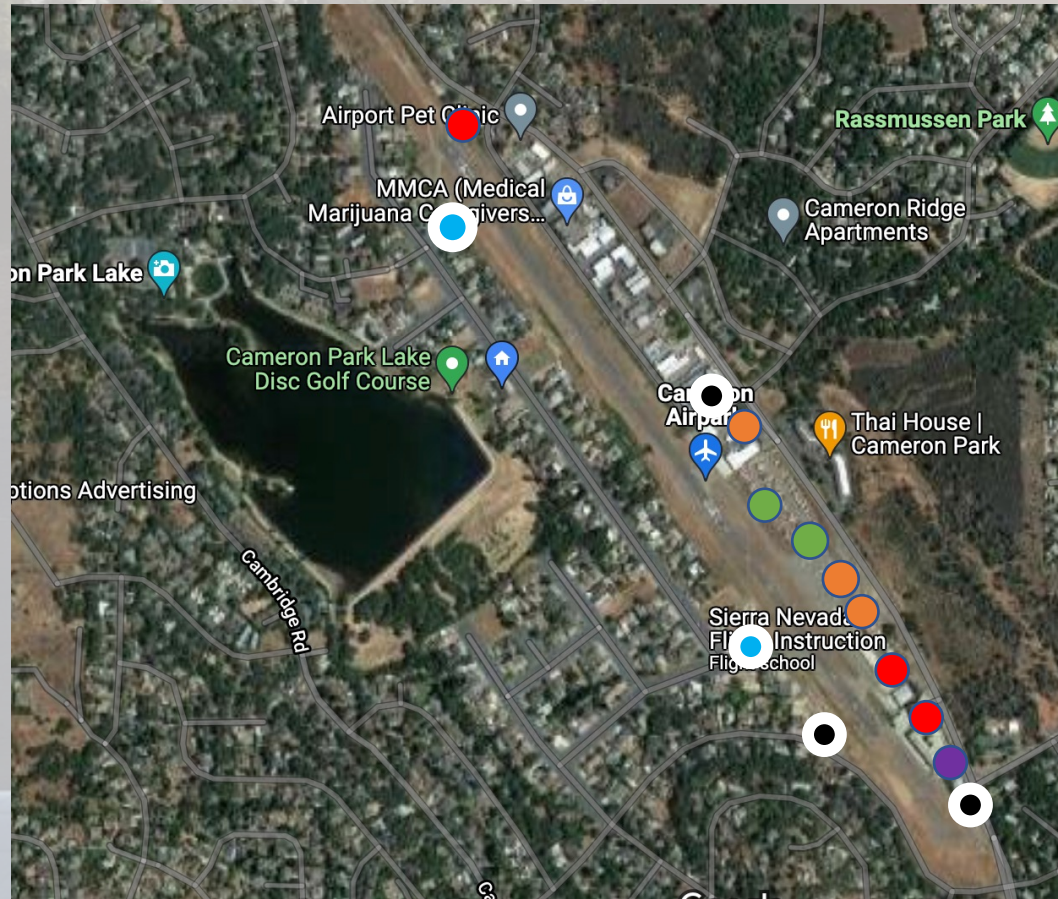
- RUNWAY MID FIELD**: Motion: 4 minutes ago
- RUNWAY NORTH**: Motion: 3 hours ago
- RUNWAY SOUTH**: Motion: 42 minutes ago

Each feed includes a timestamp of '2022-04-24 20:10:26' and the UniFi logo in the bottom right corner. The bottom navigation bar contains icons for home, camera, user, and settings.

# Backup



# Review: Cameron Park Access Points



## Externally Managed

- Aircraft Ops Facing Airport
- RV Parking
- Plaza Hangars (North & South)
- Millennium Airspace and Defense

● CPAD Access ● CPAD Airpark

# 9 Airport Focus Areas

## CPAD Managed

- 1) CPAD Grounds
- 2) CPAD Owned Hangars\*
- 3) CPAD Tie Down Tenants
- 4) Gate Key Card Owners
- 5) Airpark\*\*

## Externally Managed

- 6) Aircraft Operations Facing Airport\*\*\*
- 7) RV Parking
- 8) Plaza Hangars (North and South)
- 9) Millennium Airspace and Defense (MADD)

\*Includes Foothill Flight Center and Max Aero

\*\* Includes Sierra Nevada Flight School

\*\*\* Vultures Row Aviation (Chuck), Charlie / T-Hangars, Main Air Maintenance (Richard)