



Risk Management Team

David Becker, Dominic Coutches, Diane Shariff

March Update

9 Airport Focus Areas

CPAD Managed

- 1) CPAD Grounds
- 2) CPAD Owned Hangars*
- 3) CPAD Tie Down Tenants
- 4) Gate Key Card Owners
- 5) Airpark**

Externally Managed

- 6) Aircraft Operations Facing Airport***
- 7) RV Parking
- 8) Plaza Hangars (North and South)
- 9) Millennium Airspace and Defense (MADD)

*Includes Foothill Flight Center and Max Aero

** Includes Sierra Nevada Flight School

*** Vultures Row Aviation (Chuck), Charlie / T-Hangars, Main Air Maintenance (Richard)

Recommendation from January Require Naming Airport as Additionally Insured

CPAD Managed

- 1) CPAD Grounds
- 2) CPAD Owned Hangars*
- 3) CPAD Tie Down Tenants
- 4) Gate Key Card Owners
- 5) Airpark**

Externally Managed

- 6) Aircraft Operations Facing Airport***
- 7) RV Parking
- 8) Plaza Hangars (North and South)
- 9) Millennium Airspace and Defense (MADD)

*Includes Foothill Flight Center and Max Aero

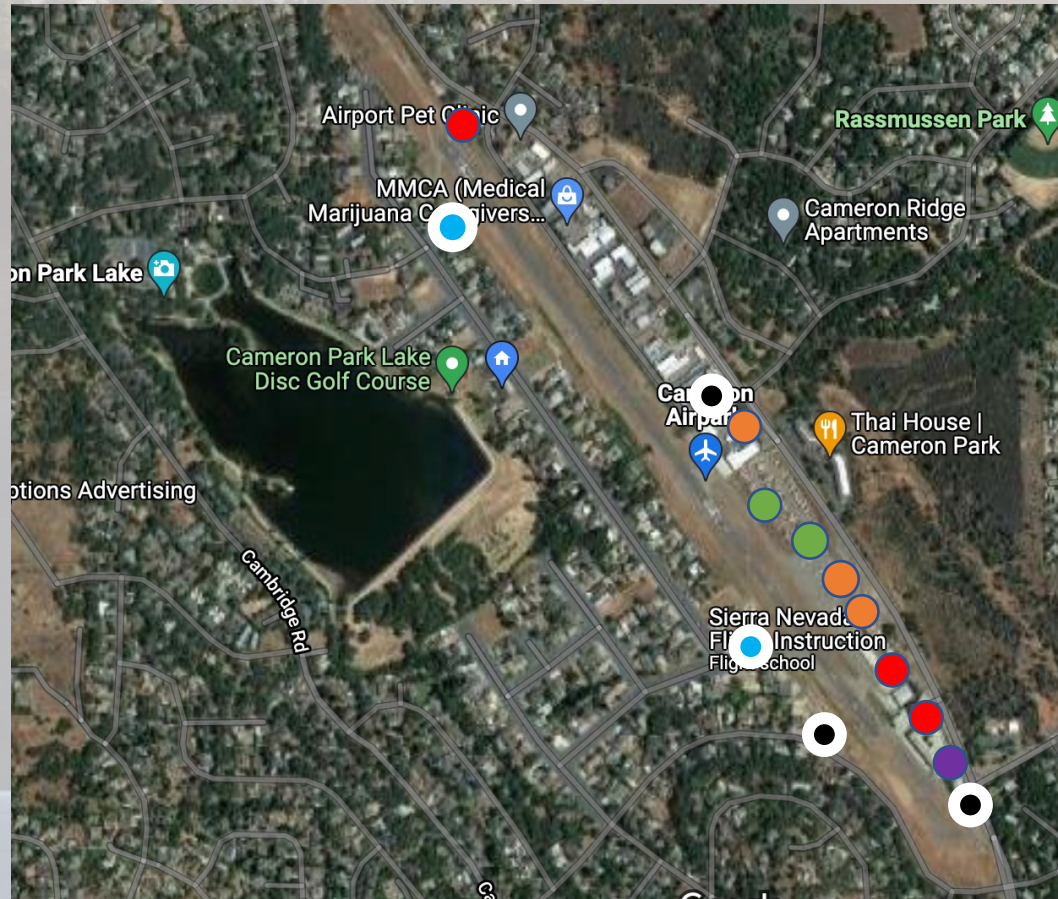
** Includes Sierra Nevada Flight School

*** Vultures Row Aviation (Chuck), Charlie / T-Hangars, Main Air Maintenance (Richard)

Today's Sub Topic

**User fees
Indemnification
and
Security for
East Side Owners**

Review: Cameron Park Access Points



Externally Managed

- Aircraft Ops Facing Airport
- RV Parking
- Plaza Hangars (North & South)
- Millennium Airspace and Defense

● CPAD Access ● CPAD Airpark

Focus for Today

CPAD Managed

- 1) CPAD Grounds
- 2) CPAD Owned Hangars*
- 3) CPAD Tie Down Tenants
- 4) Gate Key Card Owners
- 5) Airpark**

Externally Managed

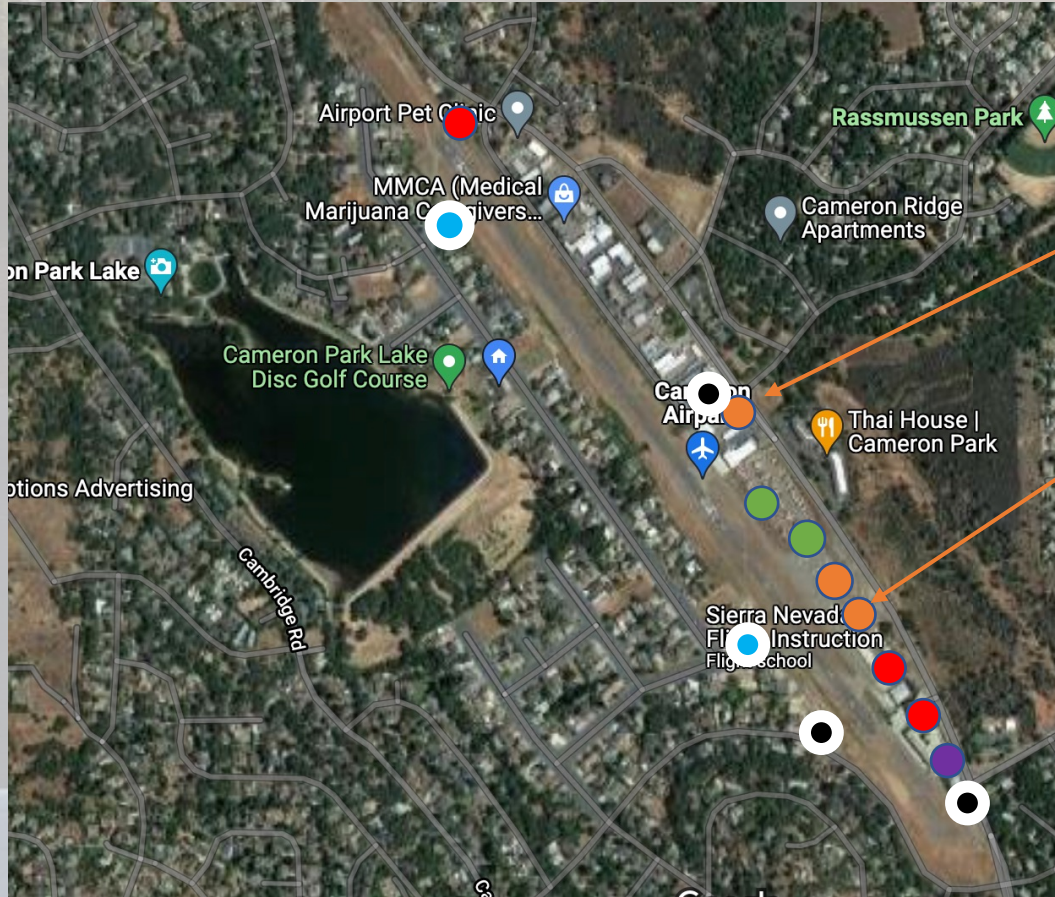
- 6) Aircraft Operations Facing Airport***
- 7) RV Parking
- 8) Plaza Hangars (North and South)
- 9) Millennium Airspace and Defense (MADD)

*Includes Foothill Flight Center and Max Aero

** Includes Sierra Nevada Flight School

*** Vultures Row Aviation (Chuck), Charlie / T-Hangars, Main Air Maintenance (Richard)

Cameron Park Access Points: Aviation Repair and Construction



● Aircraft Ops Facing Airport

- **Vultures Row Aviation:** Privately owned with own security gate and keypad. Direct Access.
- **Main Air: Aircraft Maintenance Facility:** Customers Taxi Aircraft for Maintenance, Service of Airport. Customers can also access through gate on Cameron Park Drive.



Aviation Repair and Construction

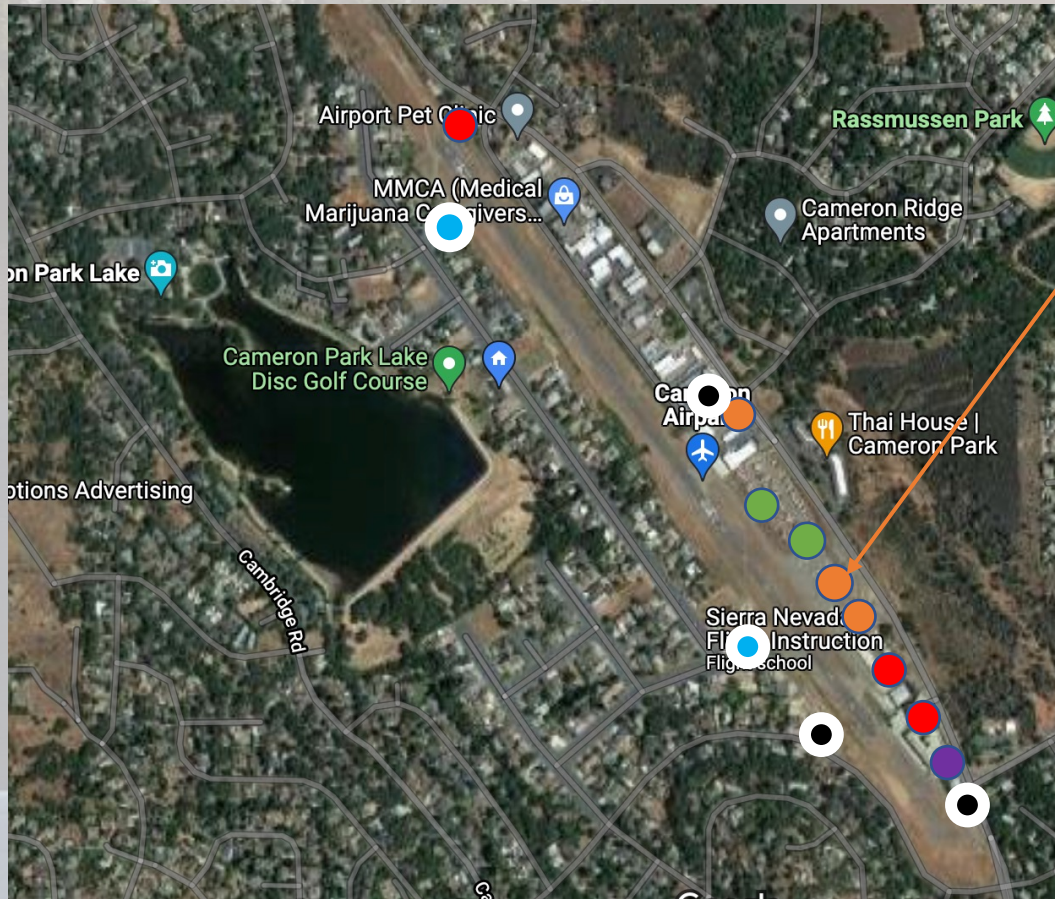
Vulture Row Aviation



Main Air



Cameron Park Access Points: Aviation Storage Privately Owned



● Aircraft Ops Facing Airport

- Large Private Hangar
- 13 T-Hangars Privately Owned
Land Leased from Private
Owner
- Private Gated Auto Ramp and
2 People Gates

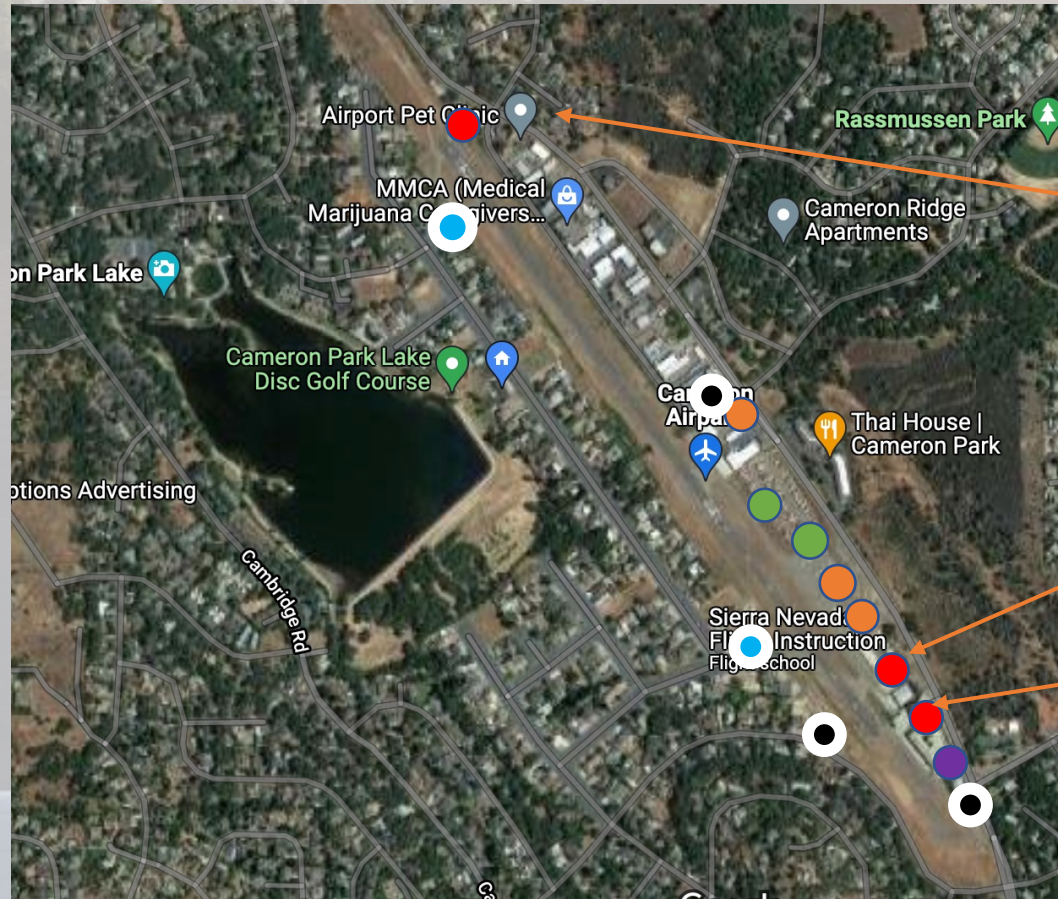


Aviation Storage

Large Private & 13 T-Hangars



Cameron Park Access Points: Non-Aviation Business with Hangars



Aircraft Ops Facing Airport

- North Plaza
 - 2976
- South Plaza
 - 3300 Offices
 - 3330 Turret Building



 CPAD Access  CPAD Airpark



Non-Aviation Businesses with Hangars

North Plaza- 2976



South Plaza- 3300



South Plaza- 3330





Non-Aviation Businesses with Hangars

North Plaza- 2976



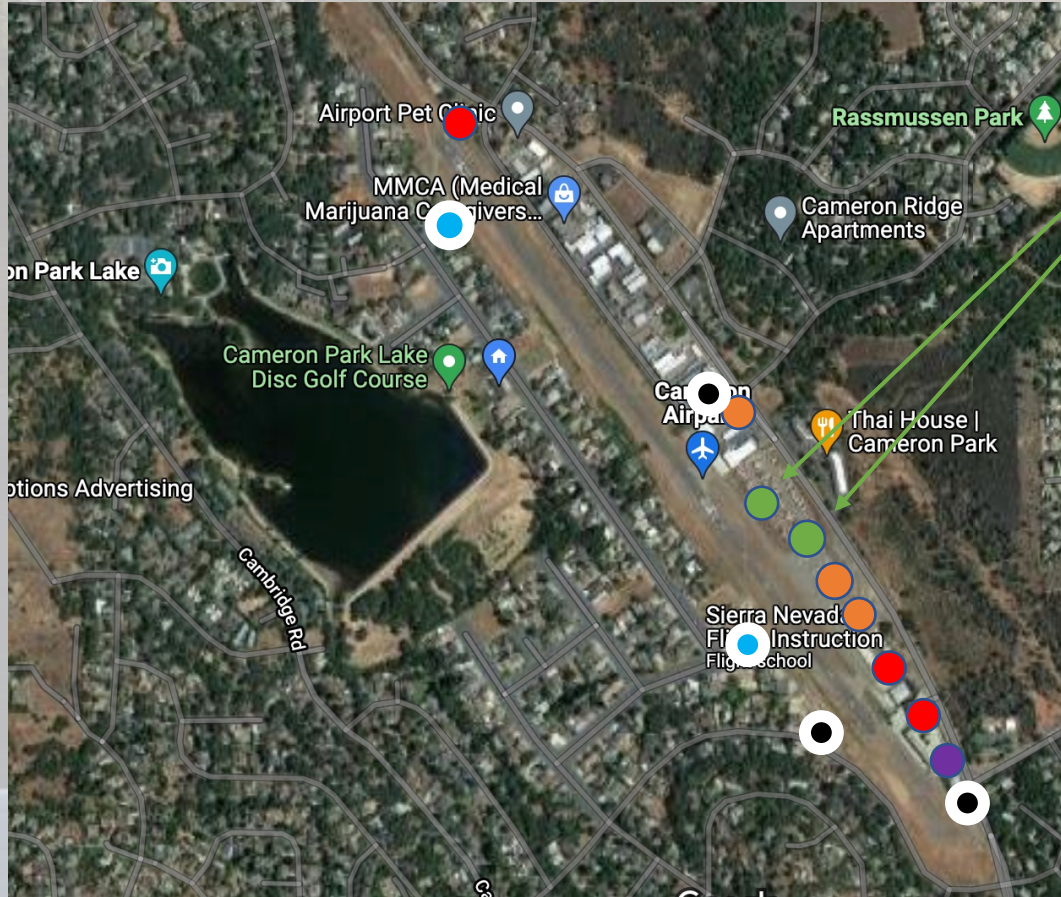
South Plaza- 3300



South Plaza- 3330



RV Parking – Next Phase



RV Parking

- High Risk: Break ins. No visibility and no control who accesses airport.
- Only option is to Fence



● CPAD Access ● CPAD Airpark

Cirrus LLC/ MADD – Next Phase

MADD - 3400



Cirrus LLC: Abandoned Dave's

